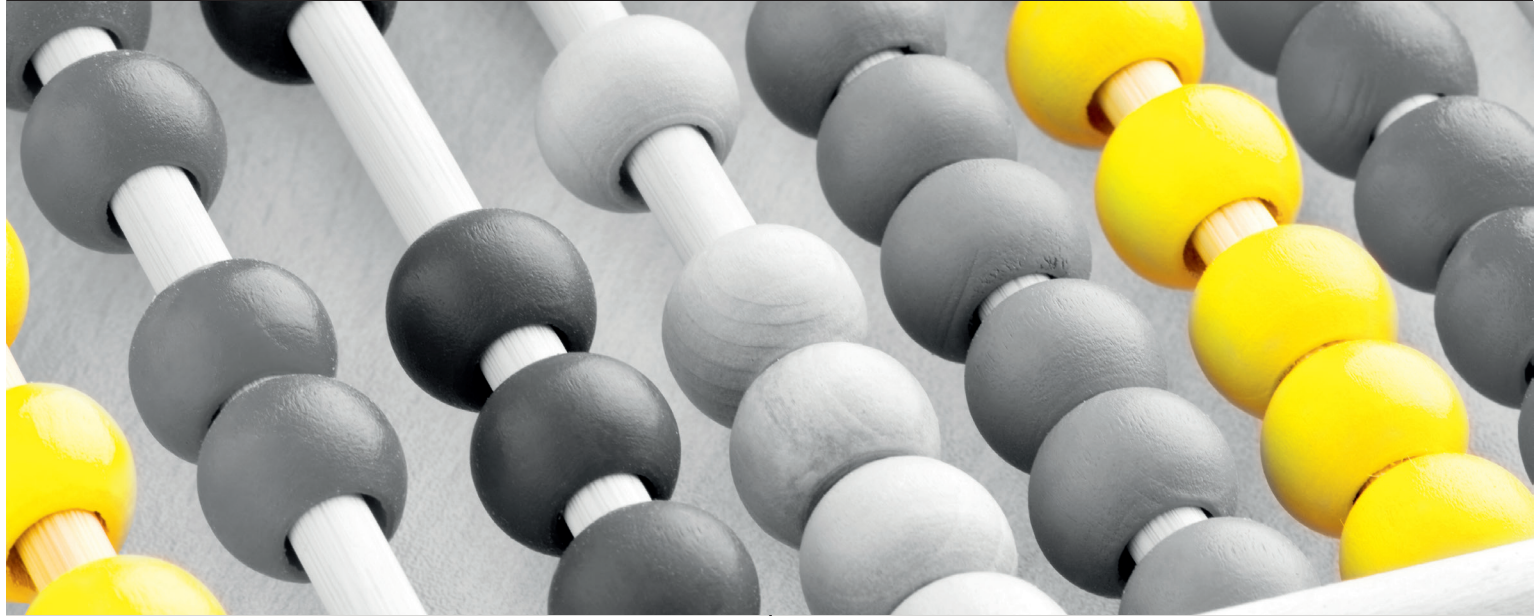


OUR NUMBERS



- **14,772** students studied at Wintec in 2017 (full and part-time)
- **950** staff are employed at Wintec
- **600** high-speed internet-enabled workstations are available for our students
- **18:1** is our student to academic staff ratio
- **14** degree programmes are offered at Wintec
- **31** diplomas are offered at Wintec
- **12** postgraduate qualifications are offered at Wintec
- **85** certificates are offered at Wintec
- **12** schools and centres make up Wintec
- **7** is the number of Wintec campuses in Hamilton and the greater Waikato region
- **1,725** international students study at Wintec in 2017
- **50** is the number of countries our students come from
- **75** Wintec staff have joined Habitat for Humanity global building projects
- **60%** of our teaching staff have academic qualifications at degree level or above
- **44%** of our teaching staff have postgraduate qualifications
- **50%** of our students are over the age of 25 and 50% are under the age of 25
- **100%** of our teaching staff hold subject-specialist qualifications and an adult teaching qualification (or are working towards one)
- **28%** of our students are Māori or Pasifika
- **37%** of our Māori students studied at Level 7 and above in 2017
- **23%** of Wintec's total revenue comes from global operations (this includes international students, off-shore delivery of programmes and off-shore campuses, and consultancy services)
- **78%** of Wintec's students are in employment within six months of graduating
- **\$15m** is the total revenue international education contributes to Wintec each year
- **\$4.2b** is the total revenue international education brings to New Zealand's economy
- **\$2.2m** surplus posted by Wintec in 2017

