



**Medium**

Digital colour photograph

**Genre**

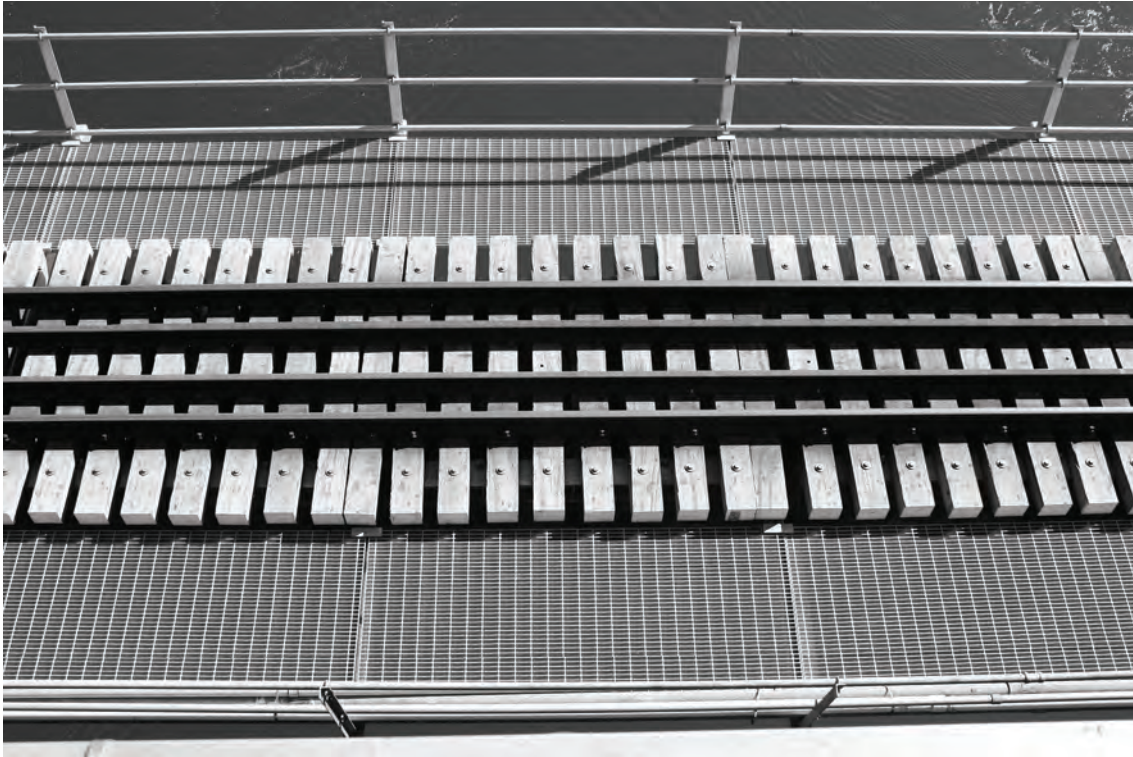
Documentary

**Concept**

(Above) This image was taken to meet the 'looking down' criteria of our first assignment. I waited until there was no traffic and I was lucky enough to capture the image as a pedestrian was walking past. (Right) This image was taken while I was exploring the city, trying to find symmetry in the world around me. It wasn't until later that I realised the cross shadow created by a window frame.







**Medium**

Digital colour photograph

**Genre**

Documentary

**Concept**

These images are more examples of finding symmetry in the world around me. I explored using different points of view and captured a variety of images taken from different angles to keep this shoot interesting. The image to the right was taken from underneath the walkway into the Garden Place library.





**Medium** Digital colour photograph

**Genre** Documentary / Still Life

**Concept** (Above) This image of the Wintec library is my favourite because of the depth and composition. This fits the birds eye view category of my first shoot. (Right) This image is from my second assignment that had a 'Living Well' theme. The dark coloured liquid in the skull represents the absorption of knowledge and the books reinforce this message.







**Medium**

Digital colour photograph

**Genre**

Still Life

**Concept**

These images encompass the Living Well theme. Skulls are a representation of mortality. Green represents life. (Above) The mandarins were used to create balance, colour contrast and to represent healthy eating. (Right) The eggs represent new life and the earthenware pot is a reproduction of a whenua pot. A whenua pot would hold the placenta, and was buried to tie the baby to the land.





**Medium**

Digital colour photography

**Genre**

Still Life

**Concept**

(Left) Following my Living Well theme, I used makeup and beauty accessories to represent the beautification aspect of living well. I took inspiration from one of Irving Penn's still life images.

**Medium**

Digital colour photography

**Genre**

Still Life

**Concept**

(Right) The religious elements in this image were used to represent the significance of religion, beliefs and spirituality in living a well life. In this image I paid tribute to my father, who was Catholic.







**Medium**

Digital colour photography

**Genre**

Still Life

**Concept**

(Left) These flax flowers are a representation of nature, culture and art, all of which are essential for me to live well. Culture and art are two elements that are very important parts of my life.

**Medium**

Digital colour photography

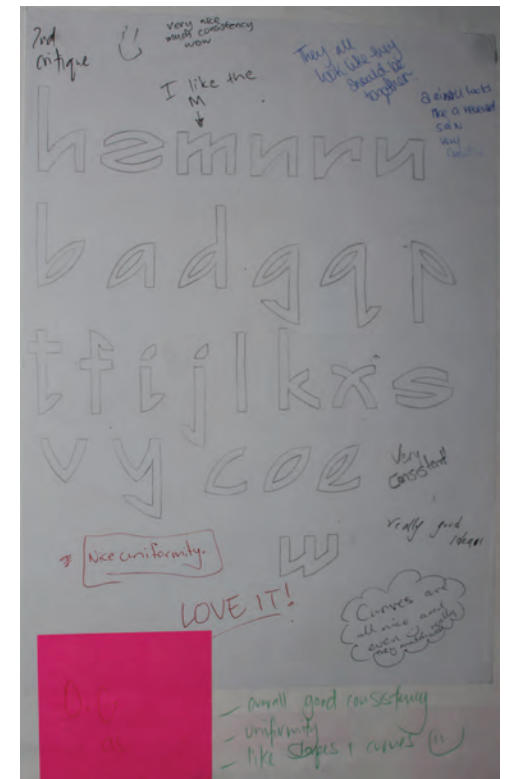
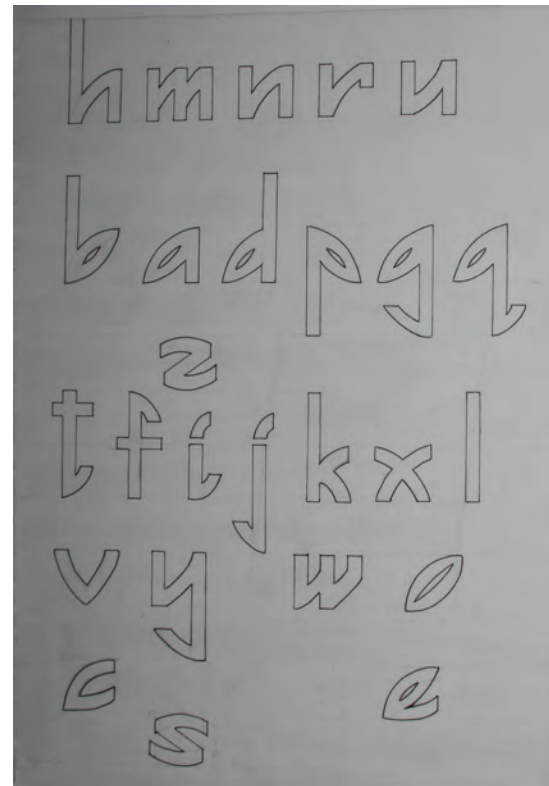
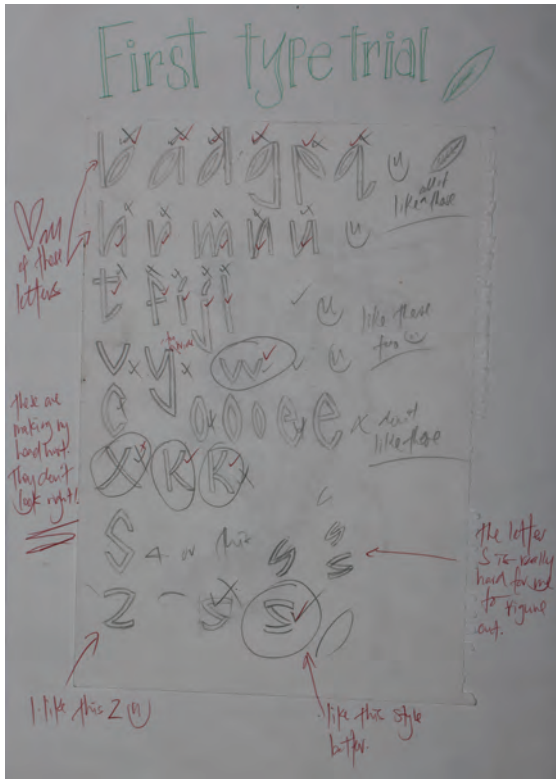
**Genre**

Still Life

**Concept**

(Right) These two brass miniatures represent comfort and relaxation as these are both important factors in living a balanced life.





Medium

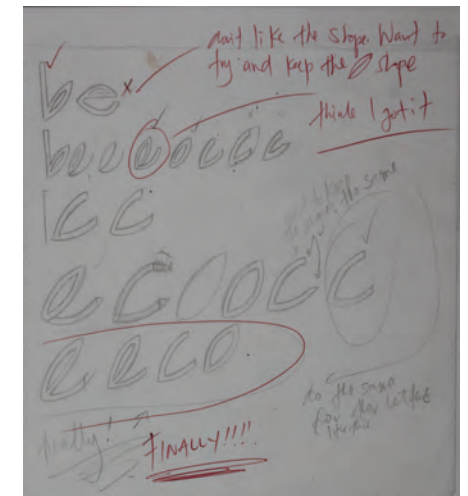
Pencil/Ink on paper

Target Audience

Women, 45-55

Concept

Typeface trials and development. From my research I found that my target audience is surrounded by brands that use a lowercase typeface. I based my typeface on a leaf shape.



a b c d e f g h i

j k l m n o p q r

s t u v w x y z

Medium

Adobe Illustrator

Target Audience

Women, 45-55

Concept

(Left) I named my final typeface 'Gracino'. The name is an anagram of the word organic. I am happy with the way my final typeface turned out and with the way the leaf shape is obvious in some of my letters. I like the x-height of my typeface and the way certain letters look next to each other.

nature always wears  
the colours of the  
spirit





Medium

Adobe Illustrator

Target Audience

Women, 45-55

Concept

Trial posters for an eco friendly fashion show. Experimented with layout and colour. Created images that incorporated nature and fashion.



Medium

Adobe Illustrator

Target Audience

Women, 45-55

Concept

Continuation of layout experimentation and trials.





gracino in conjunction with

sew  
green

present an

eco  
fashion  
show



1st  
may

9pm

grand  
hall

gracino.co.nz

**Medium**

Adobe Illustrator

**Target Audience**

Women, 45-55

**Concept**

The image is the most important feature of this poster and I made sure to create a simple illustration that represented fashion and nature. I chose to have my typeface outlined as I didn't want it to distract from the image.

gracino in conjunction with sew green



present  
an

---

eco  
fashion  
show

---

1st may  
9pm  
grand hall

gracino.co.nz

Medium

Adobe Illustrator

Target Audience

Women, 45-55

Concept

The shoes I drew for this were inspired by old school t-bar high heels. I chose to use this style of shoe to appeal to my target audience. I used a darker lime green for the shoe colour so they would stand out against the lighter green. I chose to use the dark brown as it contrasted against the greens.





**Medium**

Acrylic paint, charcoal, pastel

**Concept**

This painting is part of my final series. We were limited to using one colour, white and charcoal. This painting was inspired by a brick pattern I sketched and the edge of the Wintec pond. My intention was to use the red brick as a mask for the woman. I incorporated texture into this painting using brush strokes.







**Medium**

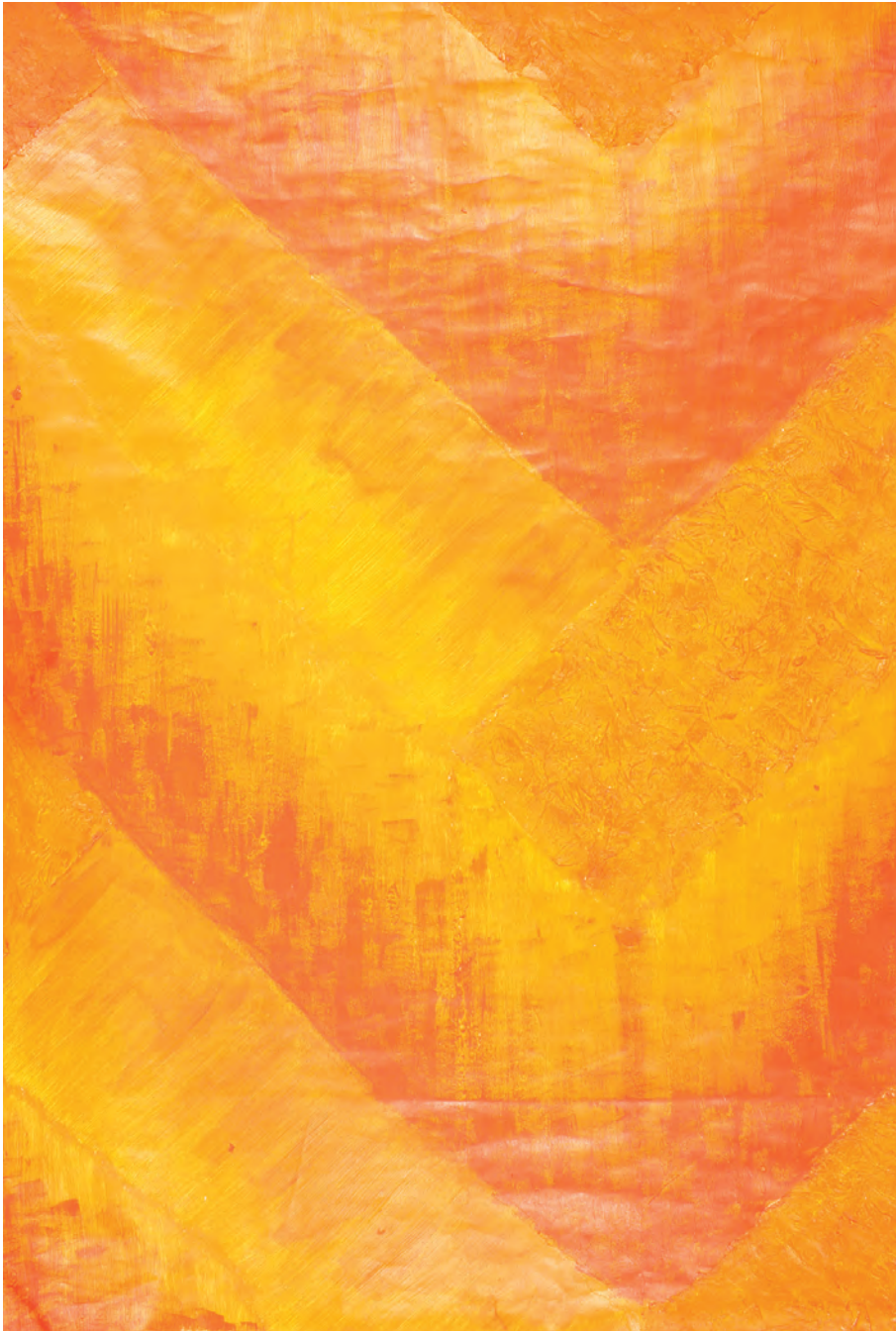
Acrylic paint, charcoal

**Concept**

This painting was inspired by a combination of works I created. I combined elements from my book collage and the sketch of the brick pattern. We were limited to using white paint and charcoal. In order to create more colours and texture, I crushed charcoal into the white paint.







**Medium**

Acrylic paint, tissue

**Concept**

This painting is the last in my brick series. I chose to use orange and yellow in this painting to add some bright, bold colours as the rest of my series to bring it to life. I glued tissue paper down and painted over it to give texture and depth to specific areas of the painting. I painted the bricks to make them look like steps to add more depth.



**Medium**

Paper, wood

**Concept**

This wall hanging was created using paper beads. The shape for the beads was inspired by the kowhai seedpod. Due to the shape of the beads and the spacing between each one, the strands resemble a piupiu.





**Medium**

Paper, string

**Concept**

This was also inspired by the kowhai seedpod and some dried plant fibre I collected. I like the organic feel this sculpture has and how it has an umbilical, new life feel to it.

.



**Medium**

Paper, string, jute

**Concept**

The last sculpture in this series follows the kowhai seedpod theme and also incorporates lines and texture. The lines on the jute resemble flax weaving and taaniko patterns. From a distance, the divisions inside each structure look like the seedpod.



**Medium**

Wire, paper, plaster, styrofoam, paint

**Concept**

This sculpture was based on an illustration I created. The sculpture is a Jesus piece. I used references to Jesus (cross, INRI, thorn trigger) and the slang term for a gun which is a 'piece'.