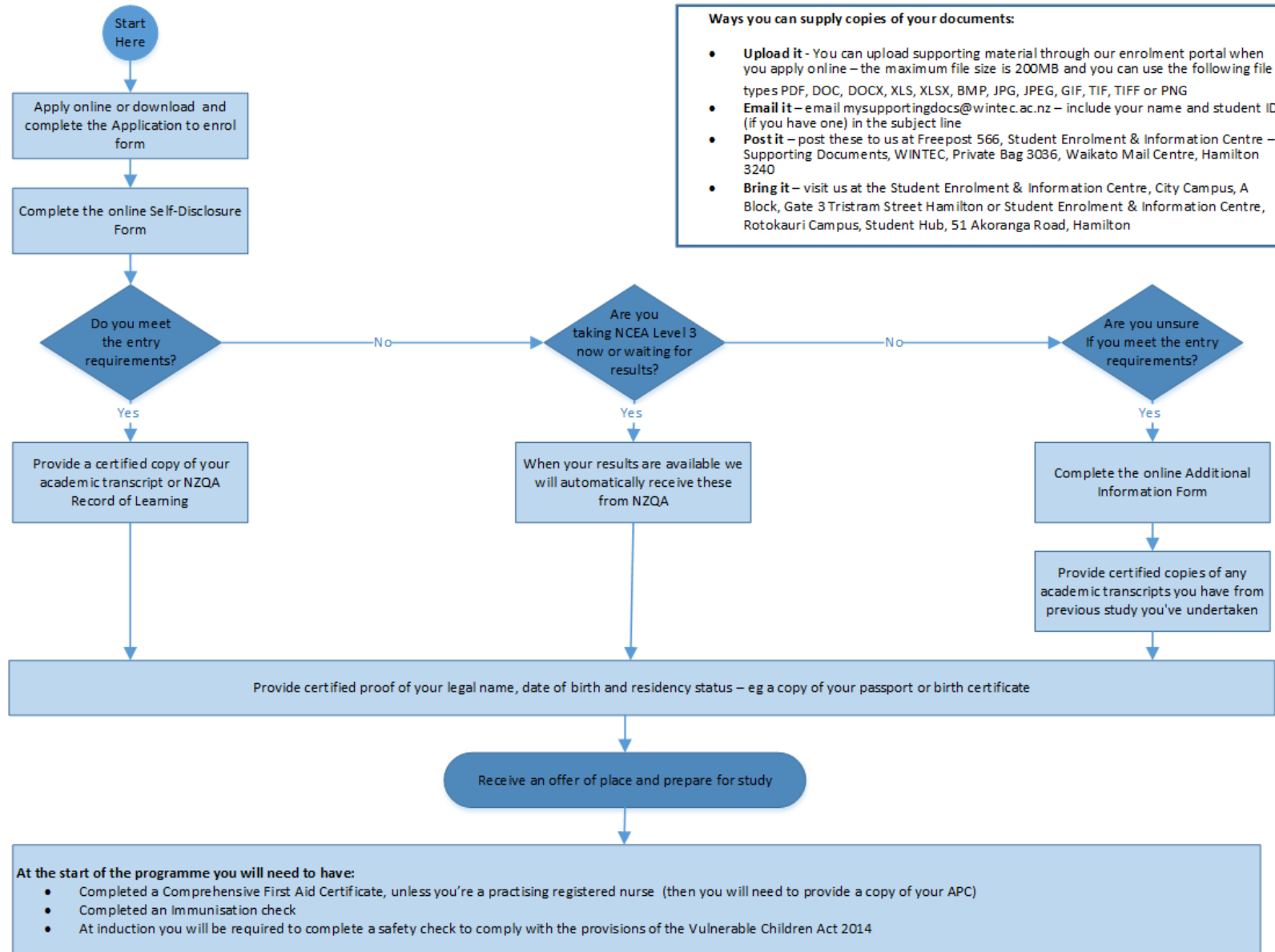


# CENTRE FOR HEALTH AND SOCIAL PRACTICE

## Applying for Nursing - a Step-by-Step Guide for Domestic Applicants

Step 1	Step 2	Step 3	Step 4
Apply & Submit Supporting Documents	Assessment and Selection	Enrolment Offer	Prepare for Your First Day
<p>➔ <b>Apply online:</b> <a href="http://www.wintec.ac.nz/apply">www.wintec.ac.nz/apply</a> or download and complete the Application to Enrol Form: <a href="http://www.wintec.ac.nz/application-form">www.wintec.ac.nz/application-form</a></p> <p>We'll email you to let you know we've received your application.</p>	<p>Once we've received your application and supporting documents we'll assess your application</p> <p>If you don't meet the entry criteria we may ask you to complete the online Additional Information Form you can find this here: <a href="http://www.wintec.ac.nz/additional-information">www.wintec.ac.nz/additional-information</a></p>	<p>If your application is successful, we'll email you a link to your enrolment offer that you can view and accept online.</p> <p>➔ <b>Accept your offer</b> You'll need to accept your offer as soon as you can to secure your place on the programme</p>	<p>Before the start of the programme you'll need to make sure you've completed a few other checks:</p> <p>➔ <b>Complete your Comprehensive First Aid Certificate</b> ➔ <b>Immunisation Check</b></p> <ul style="list-style-type: none"><li>• <b>Comprehensive First Aid Certificate</b> - You need to provide a copy of a current First Aid Certificate or evidence you have enrolled in a course that will be completed before the start date of your programme. If you're a practising registered nurse you need to supply a copy of your current Annual Practising Certificate (APC)</li><li>• <b>Immunisation Check</b> - your doctor will need to assess your immunisation status and complete the Immunisation Form. You can find this here: <a href="http://www.wintec.ac.nz/immunisation">www.wintec.ac.nz/immunisation</a>. (You'll need to cover the cost of any screening, treatment or vaccinations you may require.)</li><li>• <b>Safety Check</b> - during your induction you will be required to complete a safety check to comply with the provisions of the Vulnerable Children Act (VCA) 2014. This will include, but isn't limited to:<ul style="list-style-type: none"><li>➤ A referee check</li><li>➤ A police vetting check</li><li>➤ A risk assessment</li></ul></li><li>• You can find our more information about the VCA requirements on our web site at <a href="http://www.wintec.ac.nz/vca">www.wintec.ac.nz/vca</a></li></ul>
<p>➔ <b>Submit your supporting documents:</b></p> <ul style="list-style-type: none"><li>• Complete the online Self-Disclosure Form - you can find this here: <a href="http://wintec.ac.nz/self-disclosure">wintec.ac.nz/self-disclosure</a></li><li>• Provide your NCEA Results or Academic Transcript</li><li>• Provide certified proof of your legal name, date of birth and residency status</li></ul>	<p>As part of the selection process one of our academic staff may want to speak to you about your application.</p> <ul style="list-style-type: none"><li>• We'll either ask you to come in and meet us; or</li><li>• we'll organise a time to speak to you by phone or Skype</li></ul> <p>If you're not selected for the programme you've applied for we'll try and refer you to another programme to help you reach your study and career goals</p>	<p>There are different types of offer:</p> <ul style="list-style-type: none"><li>• <b>Unconditional offer</b> - your place is confirmed. The next step is to prepare for your first day</li><li>• <b>Conditional offer</b> - your place is either conditional on you supplying us with some further information/documents eg verification of your ID; or you're waiting for results to meet the academic entry criteria. We'll let you know what it is we need.</li><li>• You can email us your supporting documents to: <a href="mailto:mysupportingdocs@wintec.ac.nz">mysupportingdocs@wintec.ac.nz</a></li></ul>	
<ul style="list-style-type: none"><li>▶ If we haven't received all the information we need to assess your application we'll email you a letter that sets out what else we need</li><li>▶ You can email your supporting documents to us at <a href="mailto:mysupportingdocs@wintec.ac.nz">mysupportingdocs@wintec.ac.nz</a></li></ul>		<ul style="list-style-type: none"><li>▶ With your enrolment offer you'll receive a link to your First Day Flyer - this tells you when your first day is and where to come</li></ul>	<ul style="list-style-type: none"><li>▶ Jump the ID queue and send in a photo for your ID card to <a href="mailto:idcards@wintec.ac.nz">idcards@wintec.ac.nz</a></li><li>▶ Now is a good time to apply to Study Link</li><li>▶ Come and visit us on campus for a tour</li></ul>



### Ways you can supply copies of your documents:

- **Upload it** - You can upload supporting material through our enrolment portal when you apply online – the maximum file size is 200MB and you can use the following file types PDF, DOC, DOCX, XLS, XLSX, BMP, JPG, JPEG, GIF, TIF, TIFF or PNG
- **Email it** – email [mysupportingdocs@wintec.ac.nz](mailto:mysupportingdocs@wintec.ac.nz) – include your name and student ID (if you have one) in the subject line
- **Post it** – post these to us at Freepost 566, Student Enrolment & Information Centre – Supporting Documents, WINTEC, Private Bag 3036, Waikato Mail Centre, Hamilton 3240
- **Bring it** – visit us at the Student Enrolment & Information Centre, City Campus, A Block, Gate 3 Tristram Street Hamilton or Student Enrolment & Information Centre, Rotokauri Campus, Student Hub, 51 Akoranga Road, Hamilton