

# Waikato Trades Academy



# Waikato Trades Academy

## Vocational Pathways

### Manufacturing and Technology

Manufacturing and Technology  
Level 2 – 29 Credits

Electrical Engineering  
Level 2 – 30 Credits

Education Achievement in  
Automotive Engineering  
Level 3 – 26 Credits

Educational Achievement  
in Mechanical Engineering  
(General) Level 3 – 30 Credits

### Construction and Infrastructure

Construction and Infrastructure  
Level 2 – 30 Credits

Building and Construction  
Level 3 – 27 Credits

### Social and Community Services

Social and Community  
Services  
Level 2 - 24 Credits

### Primary Industries

Landscape Construction  
and Tree Work  
Level 2 - 27 Credits

### Service Industries

Hairdressing and  
Beauty Therapy  
Level 2 – 30 Credits

Café Skills  
Level 2 – 30 Credits

Outdoor Experience  
Level 2 - 29 Credits

Hairdressing and  
Beauty Therapy  
Level 3 – 28 Credits

Introduction to  
Professional Cookery  
Level 3 – 26 Credits

Educational Achievement  
in Exercise  
Level 3 – 29 Credits

- 04** Welcome
- 04** Our campuses
- 05** Still at high school?
- 06** Create your world through a Vocational Pathway
- 07** How does Waikato Trades Academy work?
- 08** Level 2
- 08** Manufacturing and Technology
- 09** Manufacturing and Technology (Longveld)
- 10** Electrical Engineering
- 11** Construction and Infrastructure
- 12** Service Industries
  - Hairdressing and Beauty Therapy
- 13** Service Industries – Café Skills
- 14** Outdoor Experience
- 15** Social and Community Services
- 16** Landscape Construction and Tree Work
- 17** Level 3
- 17** Automotive Engineering
- 18** Mechanical Engineering
- 19** Building and Construction
- 20** Service Industries
- 20** Hairdressing and Beauty Therapy
- 21** Introduction to Professional Cookery
- 22** Educational Achievement in Exercise
- 23** How do I enrol?
- 24** FAQs

#### **Disclaimer**

The information contained in this booklet is correct at the time of publishing (August 2021). Wintec (Waikato Institute of Technology) reserves the right to cancel or postpone any of the programmes and shall not be liable for any claim other than the proportion of programme fees which the cancelled portion bears. Some programmes may be dependent upon formal approval from NZQA, Tertiary Education Commission funding allocation, and the number of enrolments. As part of the New Zealand Qualifications Authority (NZQA) targeted review of all Level 1-6 New Zealand qualifications, there may still be changes to some programmes starting in 2022. Fees, programmes, entry and selection criteria, and dates, are subject to change. Please check the relevant programme pages at [www.wintec.ac.nz](http://www.wintec.ac.nz) for up-to-date information and full entry regulations before applying to enrol.

# Welcome to Wintec

Our mission is to build stronger communities through education, research, and career development. Mā te mātauranga, te rangahau, me te whai mahi e ora ai te iwi.

Here at Wintec, we offer free industry-related youth programmes and experiences as a great way to earn NCEA credits. You will get to experience a feel for tertiary study, while you are still at school.



## Our campuses

Depending on what you study, you will be based at one of our three main campuses in Hamilton, or at one of our smaller campuses around the Waikato region.

### Hamilton City Campus

The Hamilton City Campus is located in the heart of the CBD. There are a variety of food outlets throughout the campus, with eateries, shops, the Waikato River, Hamilton's Lake Rotoroa, and public transport just a short walk away. There is also student accommodation on-site.

### Hamilton Rotokauri Campus

Programmes in sport science, trades, engineering, animal care, hospitality, and cookery are based at the Rotokauri Campus. Located in the north part of the city, students learn in some of the best purpose-built facilities in New Zealand, and have the chance to meet at the student hub with access to a library, computers, and great food and coffee.



### Hamilton Gardens Campus

The award-winning Hamilton Gardens are home to our third Hamilton campus. Here students have the unique opportunity to study programmes such as arboriculture, horticulture, and landscape design/construction in a hands-on, inspiring garden setting.



## Still at high school?

### **Waikato Trades Academy**

The Waikato Trades Academy (WTA) is a secondary-tertiary partnership, which allows high school students in Year 11, 12 or 13 to study at Wintec while still at school, providing students with the benefits of both worlds. The academy provides the sector-related credits required to earn a Vocational Pathway Award on NCEA Level 2 and NCEA Level 3 qualifications. More information about this can be found at [www.wintec.ac.nz/wta](http://www.wintec.ac.nz/wta).

### **Secondary-tertiary alignment resource (STAR)**

If you are a secondary student considering your post-school options, a STAR taster course may be right for you. STAR courses are available to Year 10 to Year 13 students. They aim to showcase a particular career or qualification. STAR experiences are typically one-day-long but may be up to five in some instances. Some STAR courses also have unit standards attached.

There is a range of STAR courses available. Talk to your school's careers advisor to book your place, or visit the STAR webpage for more information at [www.wintec.ac.nz/star](http://www.wintec.ac.nz/star).

Career advisors - please email [star@wintec.ac.nz](mailto:star@wintec.ac.nz) to book on behalf of your students.

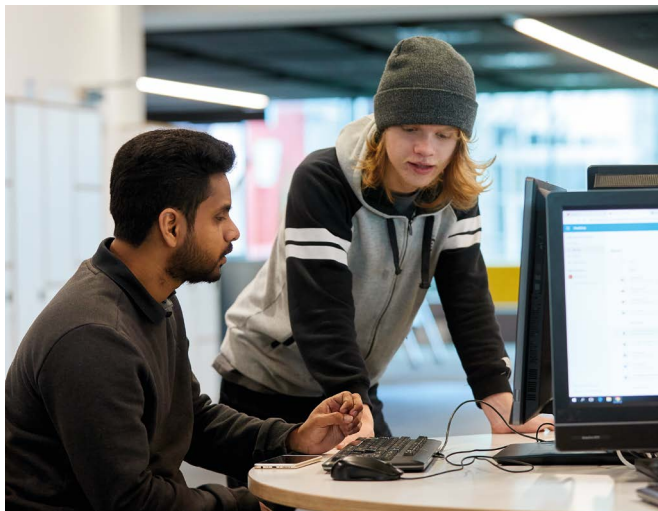
### **Open Day**

Each year, we host potential students for the Wintec Open Day. This is your chance to speak with tutors, take a tour, and get involved in hands-on activities.





# Create your world through a vocational pathway



When considering your future, it is a good idea to think about what truly makes you tick. Do you enjoy communicating with people? Do you love creating new things? Or perhaps you like helping people in their time of need.

The six vocational pathways help you understand the type of job and career path that may suit you.

These pathways provide ways to achieve NCEA Levels 1, 2, and 3, and develop ways to progress to further study, training, and employment.

They provide a framework for students to show how their learning and achievement is valued in the workplace by aligning them to the relevant skills needed for industry.

Visit [youthguarantee.education.govt.nz](https://youthguarantee.education.govt.nz) for more information.

## Introducing the six vocational pathways



### Social & Community Services

Ratonga Pāpori,  
Ratonga Hapori



### Construction & Infrastructure

Te Mahi Hanga me te  
Pūtoi Hanganga



### Manufacturing & Technology

Te Whakanao me te  
Hangarau



### Primary Industries (Food & Fibre)

Ahumahi  
Matua



### Service Industries

Ahumahi  
Ratonga



### Creative Industries

Ahumahi  
Auaha

# How Waikato Trades Academy (WTA) works

## Year 11 or 12

You can start studying at Wintec with WTA. In discussion with your career advisor, you will choose one of the available vocational pathways.

In year one, we will provide you with a broad introduction to your chosen vocational pathway. You will attend Wintec between 30 to 33 days during the year depending on your programme of choice. While studying at WTA, you can achieve credits towards NCEA Level 2. The hours are from 8:30am–3pm.

## Year 12 or 13

In discussion with your career advisor, you will continue your secondary school studies and your second year of WTA.

You will specialise in one career pathway and attend Wintec between 30 and 33 days during the year. You will study at Level 2 or 3 and gain credits towards your chosen career pathway. This year will include some self-directed learning. Some programmes may include work experience in the industry.

You must be aged 15 or over at the start of the calendar year, be enrolled in a secondary school, and be in Year 11, 12 or 13.

Adult students and school leavers are not eligible for the Waikato Trades Academy. If you are turning 15 between January and March, contact WTA to discuss possible options.

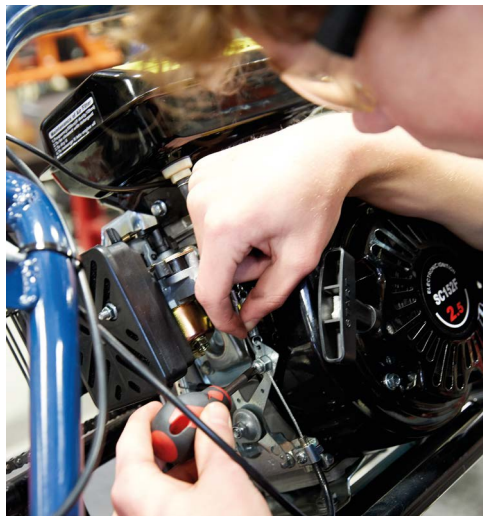
*Programmes are subject to minimum numbers. Some programmes are restricted to maximum numbers of students due to teaching space restrictions.*

## Graduating from WTA

After completing the two-year WTA programme you may:

- Achieve NCEA Level 2 or 3 at school, with a Vocational Pathway Award.
- Follow previous WTA students into higher level study at Wintec, or have the skills to move into an apprenticeship or employment.





# Manufacturing and Technology

Do you have an interest in making things work? Are you able to think outside the square? If so, this may be the pathway for you.

In this Level 2 course, you get the chance to create a fuel-powered bike that you keep at the end of the year. Throughout this project, you will learn automotive, electrical, and engineering skills. Personal protective gear will be provided.

## Manufacturing and Technology

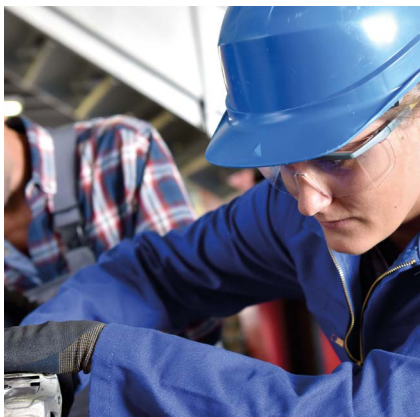
**LOCATION:** Hamilton Rotokauri Campus, Thames Campus, Ōtorohanga Campus

| Level 2            | 32 Weeks  | Version | Credits |
|--------------------|---|---------|---------|
| 229                | Identify the general locations and functions of motor vehicle systems and main components | 10      | 4       |
| 02387              | Assemble mechanical components under supervision  | 7       | 2       |
| 02395              | Select, use, and care for, engineering hand tools   | 9       | 4       |
| 15849              | Perform manual soldering and de-soldering procedures for electrotechnology work           | 6       | 2       |
| 18243              | Construct simple electronic products from supplied circuit schematics                     | 7       | 6       |
| 21671              | Carry out general engineering tasks in the motor industry                                 | 2       | 4       |
| 29674              | DKO mechanical fasteners used in mechanical engineering                                   | 1       | 3       |
| 21718              | Demonstrate knowledge of hazardous materials used in the motor and related industries     | 2       | 2       |
| 21911              | Demonstrate knowledge of safety on engineering worksites                                  | 3       | 2       |
| Total NZQA Credits |   |         | 29      |





# Manufacturing and Technology



Wintec has teamed up with Hamilton-based manufacturer Longveld to offer a unique NCEA Level 2 training course for young women interested in a career in fabrication and engineering.

It sees young women, at year 11 and 12 levels from Waikato Trades Academy partnership schools, attend one-day-a-week at the Wintec Trades and Engineering workshops. They get to build a fuel-powered mini-bike while gaining credits towards their NCEA Level 2. They may have the opportunity to gain on-the-job work experience at Longveld, a leading engineering & stainless steel manufacturing business in Hamilton. Personal protective gear will be provided.

## Manufacturing and Technology

**LOCATION:** Hamilton Rotokauri Campus

| Level 2                   | 32 Weeks  | Version | Credits |
|---------------------------|---|---------|---------|
| 229                       | Identify the general locations and functions of motor vehicle systems and main components | 10      | 4       |
| 02387                     | Assemble mechanical components under supervision  | 7       | 2       |
| 02395                     | Select, use, and care for, engineering hand tools   | 9       | 4       |
| 15849                     | Perform manual soldering and de-soldering procedures for electrotechnology work           | 6       | 2       |
| 18243                     | Construct simple electronic products from supplied circuit schematics                     | 7       | 6       |
| 21671                     | Carry out general engineering tasks in the motor industry                                 | 2       | 4       |
| 29674                     | DKO mechanical fasteners used in mechanical engineering                                   | 1       | 3       |
| 21718                     | Demonstrate knowledge of hazardous materials used in the motor and related industries     | 2       | 2       |
| 21911                     | Demonstrate knowledge of safety on engineering worksites                                  | 3       | 2       |
| <b>Total NZQA Credits</b> |   |         | 29      |

# Electrical Engineering

In this Level 2 course, our tutors will lead you through a range of entry-level electrical and electronic projects. You will design basic electrical circuits; experience soldering (binding electrical parts together); and create usable electronic products from a supplied circuit schematic. You will be taught how to operate carefully within a safe working environment. Personal protective gear will be provided.



## Electrical Engineering

**LOCATION:** Hamilton Rotokauri Campus

| Level 2                   | 32 Weeks   | Version | Credits   |
|---------------------------|--|---------|-----------|
| 5911                      | Explain basic magnetism and electromagnetism as applied to the electrotechnology industry                              | 5       | 1         |
| 5922                      | Use cutting tools and machines in performance of electrical installation and maintenance                               | 6       | 2         |
| 6626                      | Demonstrate knowledge of electrical and electronic components  | 7       | 3         |
| 17799                     | Demonstrate knowledge of testing for electrical safety for electrical appliance servicing - single-phase               | 7       | 2         |
| 18239                     | Demonstrate introductory knowledge of circuit concepts and measurement for electronics                                 | 7       | 5         |
| 18241                     | Demonstrate knowledge of basic electronic systems  | 7       | 5         |
| 18243                     | Construct a simple electronic product from a supplied circuit schematic  | 7       | 6         |
| 23751                     | Demonstrate knowledge of electrical calculations and theory, test, instruments, and components of electrical equipment | 5       | 6         |
| <b>Total NZQA Credits</b> |  |         | <b>30</b> |



# Construction and Infrastructure

Do you enjoy working with others in a team?

Gain an insight into the areas of trade construction and infrastructure with this Level 2 course. Hands-on and practical, you will gain knowledge and a variety of skills relating to construction such as building, plumbing, and electrical engineering. This course provides you with entry-level skills that you can take with you into the next level of study or work within the fields of construction and infrastructure. Personal protective gear will be provided.

## Construction and Infrastructure

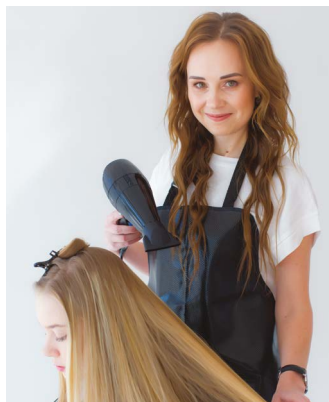
**LOCATION:** Hamilton Rotokauri Campus, Thames Campus, Ōtorohanga Campus

| Level 2                   | 32 Weeks   | Version | Credits |
|---------------------------|--|---------|---------|
| <b>Electrical</b>         |  |         |         |
| 5907                      | Work safely with electrical equipment  | 7       | 1       |
| 15849                     | Perform manual soldering and de-soldering procedures for electrotechnology work  | 6       | 2       |
| 15852                     | Isolate and test low-voltage electrical sub circuits                             | 6       | 2       |
| <b>Plumbing</b>           |  |         |         |
| 1120                      | Hand tools and checking equipment for drain laying                               | 6       | 2       |
| 2136                      | Hand tools and testing equipment for plumbing                                    | 5       | 2       |
| 2139                      | Soft solder metal joints   | 4       | 3       |
| 2142                      | Apply sealant to joints  | 4       | 3       |
| <b>Building</b>           |  |         |         |
| 24354                     | Demonstrate knowledge of and apply safe working practises in a BCATS environment | 3       | 4       |
| 24361                     | Apply mathematical processes to BCATS projects                                   | 3       | 3       |
| 12936                     | Construct a non-consent timber framed utility building as a BCATS project        | 6       | 8       |
| <b>Total NZQA Credits</b> |  |         | 30      |

## Service Industries (Level 2)

Are you a people person? Do you have an interest in beauty therapy, hairdressing, or cafés and restaurants? If so, this could be the pathway for you.

Whilst on this course you will not only gain entry level skills that align with NCEA level 2, but skills employers are looking for that are required by industry.



## Hairdressing and Beauty Therapy

Enjoy hands-on and practical learning while you develop key hairdressing and beauty therapy competencies throughout this 32-week programme. You will cover topics including preparing hair for hairdressing; basic principles in workplace requirements in the salon; protecting the client for hairdressing; assisting an operator; sustainability concepts for the salon; maintaining and ordering supplies; providing client service and care, maintaining personal presentation; current fashion trends; and anatomy and physiology knowledge for beauty therapy.

### Service Industries – Hairdressing and Beauty Therapy

**LOCATION:** Hamilton City Campus

| Level 2                   | 32 Weeks  | Version | Credits   |
|---------------------------|---|---------|-----------|
| <b>Hairdressing</b>       |   |         |           |
| 21940                     | Workplace requirements in a salon   | 4       | 5         |
| 21941                     | Prepare hair for hairdressing   | 3       | 2         |
| 21936                     | Protect the client for hairdressing and prepare hair for hairdressing                 | 3       | 1         |
| 21937                     | Assist an operator  | 4       | 4         |
| 25439                     | Sustainability concepts for a salon   | 2       | 2         |
| <b>Beauty Therapy</b>     |   |         |           |
| 27637                     | Maintain order and supplies   | 2       | 4         |
| 27638                     | Provide client service and care   | 2       | 3         |
| 27639                     | Describe key concepts and maintain personal presentation for a beauty salon or clinic | 2       | 3         |
| 27640                     | Current fashion trends and history  | 2       | 3         |
| 27641                     | Anatomy and physiology knowledge  | 2       | 3         |
| <b>Total NZQA Credits</b> |   |         | <b>30</b> |

# Café Skills

Gain a variety of hands-on skills and an NCEA Level 2 qualification that will allow you to progress in your chosen food, beverage, or hospitality career. You will learn to work in commercial kitchens and in restaurant-service settings at Windows, the Wintec restaurant. Our tutors will lead you through preparing and applying icing and glazing to bakery products, practising food safety methods, and preparing and baking basic breads. As part of the food and beverage training, you will learn to provide table-service, and prepare and serve hot and cold non-alcoholic drinks, and use espresso equipment. Personal protective gear will be provided.



## Service Industries – Café Skills

**LOCATION:** Hamilton Rotokauri Campus

| Level 2            | 32 Weeks   | Version | Credits |
|--------------------|--|---------|---------|
| 14721              | Prepare and apply icings and glazes to bakery products | 3       | 6       |
| 167                | Practise food safety methods                           | 8       | 4       |
| 23083              | Prepare and bake basic breads                          | 2       | 4       |
| 14436              | Provide table service                                  | 7       | 4       |
| 14425              | Prepare and serve hot and cold non-alcoholic drinks    | 7       | 5       |
| 14434              | Prepare and clear areas for table service              | 7       | 3       |
| 17285              | Espresso coffee equipment and preparation              | 9       | 4       |
| Total NZQA Credits |  |         | 30      |





## Outdoor Experience

Do you have a passion for the outdoors?  
Are you interested in an outdoor job?  
This could be the pathway for you.

The *Outdoor Experience Level 2* course encompasses a variety of outdoor recreation and industry credits, achieved both on-site at the Wintec Rotokauri

Campus and in the field within an hour of campus. You will complete a 32-week programme and participate in activities like canoeing, hiking, navigation, rock climbing, and abseiling. Students will also learn about the weather, team building, life skills, first aid, kaitiakitanga, risk management, and adventure tourism.

### Service Industries - Outdoor Experience

**LOCATION:** Hamilton Rotokauri Campus

| Level 2                   | 32 Weeks   | Version | Credits   |
|---------------------------|--|---------|-----------|
| 425                       | Experience day tramps  | 6       | 3         |
| 431                       | Navigate in good visibility on land                                    | 6       | 3         |
| 444                       | Demonstrate basic rock-climbing movement                               | 7       | 1         |
| 467                       | Demonstrate personal and social development                            | 5       | 3         |
| 6401                      | Provide first aid  | 6       | 1         |
| 19425                     | DKO industry standards and legal requirements for adventure activities | 3       | 2         |
| 20157                     | Demonstrate the use of basic rope systems                              | 2       | 3         |
| 20819                     | Demonstrate canoeing skills  | 1       | 3         |
| 22015                     | Design and construct clothing or equipment                             | 1       | 6         |
| 24727                     | Impacts of tourism on the physical environment                         | 2       | 3         |
| 25459                     | Provide first aid for young children                                   | 4       | 1         |
| <b>Total NZQA Credits</b> |  |         | <b>29</b> |



# Social and Community Services

Do you want to make a difference to peoples' lives? Do you have an interest in the health sector, education, law, or community services? This pathway may be for you.

This NCEA Level 2 course will give you an introduction into the areas of health, early childhood education, and social and community services. You will learn about health topics such as the rights of clients, the role of support workers, and infection control. The community services modules will cover support services and community development, while the early childhood education modules include the promotion of child health and well-being. The practical components of this programme will enable you to participate in community field trips and industry-relevant activities.

## Social and Community Services

**LOCATION:** Hamilton City Campus, Thames Campus

| Level 2                                  | 32 Weeks  | Version | Credits |
|--|---|---------|---------|
| <b>Health</b>                            |   |         |         |
| 23686                                    | Demonstrate knowledge of a consumer's rights in a health or disability setting                        | 4       | 1       |
| 23451                                    | Describe the role of a support worker in a health or well-being setting                               | 4       | 5       |
| 20826                                    | Demonstrate knowledge of the role of infection control requirements in a health or disability setting | 5       | 3       |
| <b>Early Childhood Education and Law</b> |   |         |         |
| 29857                                    | Describe patterns of development and learning for young children                                      | 1       | 5       |
| 8545                                     | Describe factors contributing to, and consequences of, crime  | 6       | 3       |
| <b>Community</b>                         |   |         |         |
| 27299                                    | Describe benefits of participation in recreation in the local community                               | 1       | 2       |
| 1827                                     | Identify support services and resources within the community  | 9       | 2       |
| 18763                                    | Describe the process of community development as a participant  | 3       | 3       |
| <b>Total NZQA Credits</b>                |   |         | 24      |

# Landscape Construction and Tree Work

If you enjoy the outdoors and getting your hands dirty, then this is the course for you.

It includes three horticultural disciplines: tree care (arboriculture), plant care (horticulture), and landscape construction.

This course offers you the opportunity to work on a real-life landscaping project, where you will design, plan, and implement your work right through to completion.

You will learn skills such as:

- Growing and nurturing trees and shrubs
- Using equipment (such as a chipper) safely
- Supporting tree-climbing crews
- Laying concrete and pathways



## Landscape Construction and Tree Work

**LOCATION:** Hamilton Gardens Campus

| Level 2            | 32 Weeks  | Version | Credits |
|--------------------|---|---------|---------|
| 2765               | Plant Trees or Shrubs                             | 6       | 5       |
| 29661              | Assist with Site Preparation                      | 1       | 5       |
| 29668              | Prepare Mortar or Concrete                        | 1       | 2       |
| 29658              | Assist with Arboriculture Duties                  | 1       | 10      |
| 29669              | Use small machinery for Tree Work and Landscaping | 1       | 5       |
| Total NZQA Credits |   |         | 27      |

# Education Achievement in Automotive Engineering



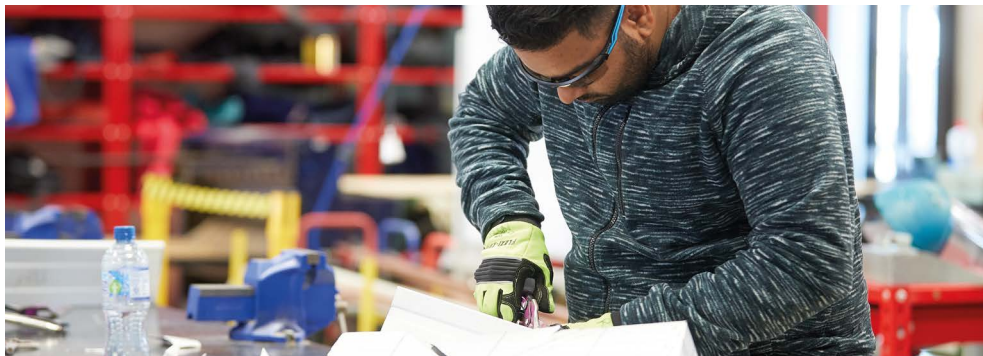
Increase your employment opportunities by learning about the New Zealand motor industry. This course will give you fast-track access to a range of ever-changing and exciting automotive-related careers.

The *Automotive Engineering NCEA Level 3* programme includes an introduction to a basic light vehicle servicing, protecting and diagnosing vehicle electronic system faults (using up-to-date testing equipment) with modern vehicles, braking system componentry diagnosis and service, faults and the repairing of modern vehicle wiring systems, battery testing and charging procedures, headlight adjustment, and repairs. Personal protective gear will be provided.

## Automotive Engineering

**LOCATION:** Hamilton Rotokauri Campus

| Level 3            | 32 Weeks   | Version | Credits |
|--------------------|--|---------|---------|
| 30556              | Service an automotive battery  | 1       | 3       |
| 5742               | Protecting electronics when servicing or repairing a vehicle or machine in the motor industry        | 5       | 2       |
| 30564              | Perform general service checks on a motor vehicle  | 1       | 2       |
| 24093              | Rectify simple vehicle lighting faults and adjust vehicle lamps                                      | 2       | 3       |
| 898                | Identify a wiring diagram and translate information to a circuit in the motor and related industries | 5       | 3       |
| 30517              | Service a brake system on a vehicle or machine   | 1       | 4       |
| 24409              | Prepare and overhaul hydraulic braking system components from light vehicles                         | 1       | 2       |
| 15446              | Remove and replace a light vehicle engine cam belt   | 4       | 3       |
| 30890              | Demonstrate knowledge of equipment used to test engine mechanical condition                          | 1       | 2       |
| 30518              | Bleed a hydraulic brake system   | 1       | 2       |
| Total NZQA Credits |  |         | 26      |



## Educational Achievement in Mechanical Engineering (General)

This NCEA Level 3 programme applies fundamental principles of engineering, physics, and materials science for the design, analysis, manufacturing, and maintenance of mechanical systems. It is the branch of engineering that includes the design, production, and operation of machinery; including hand tools and portable power tools, dimensional measuring, engineering marking out equipment, various steel cutting

and welding procedures, assembly, and most importantly, safe work practises and procedures. This take-home, project-based course will introduce you to the exciting world of engineering. It will provide you with the ability to consider an engineering apprenticeship or start a higher-level mechanical engineering qualification at Wintec. Personal protective gear will be provided.

### Mechanical Engineering

**LOCATION:** Hamilton Rotokauri Campus, Thames Campus

| Level 3            | 32 Weeks   | Version | Credits |
|--------------------|--|---------|---------|
| 29652              | Demonstrate knowledge of safety, health, risk assessment, and hazard ID and control on an engineering worksite | 1       | 3       |
| 30263              | Perform fabrication operations   | 2       | 10      |
| 30438              | Dismantle, inspect and assemble components within assemblies   | 1       | 6       |
| 30280              | Cut metals using the manual plasma cutting process   | 1       | 2       |
| 30279              | Cut steel using the manual gas cutting process   | 1       | 2       |
| 2680               | Join metals using the resistance welding process   | 7       | 4       |
| 29651              | Demonstrate knowledge of health and safety   | 1       | 3       |
| Total NZQA Credits |  |         | 30      |



# Building and Construction

This Level 3 NCEA course has an emphasis on practical content and project-based learning. Theory is directly related to the practical projects at each stage of construction, so your learning has real industry relevance. This course will offer you transferable skills in the exciting trade of building that employers are looking for. Personal protective gear will be provided.

## Building and Construction

**LOCATION:** Hamilton Rotokauri Campus, Thames Campus, Ōtorohanga Campus

| Level 3            | 32 Weeks   | Version | Credits |
|--------------------|--|---------|---------|
| 29684              | Undertake a Stage 3 BCATS Project  | 1       | 12      |
| 29677              | Follow safe workplace practises, and contribute to a health and safety culture, in a BCATS environment | 1       | 2       |
| 29680              | Communicate and work collaboratively in a Stage 3 BCATS project  | 1       | 5       |
| 29678              | Demonstrate knowledge of, select, and use materials for a Stage 3 BCATS Project                        | 1       | 4       |
| 29682              | Select, use, and maintain tools, equipment and machinery for a Stage 3 BCATS Project                   | 1       | 4       |
| Total NZQA Credits |  |         | 27      |



## Service Industries (Level 3)

This Year 2 Service Industries programme you will study towards both hairdressing and beauty therapy. All unit standards included are Level 3 and count towards Level 3 qualifications.

# Hairdressing and Beauty Therapy Services

Hairdressing is a creative and rewarding job for people with strong communication skills. In this course, you will master the art of hairstyling and many more of the necessary technical skills involved in this industry. You will learn consulting techniques to help you provide a shampoo service and dress long hair for events.

Beauty therapists help people look and feel their best. Applying makeup and spa services contribute to making clients feel pampered. These are just a few treatments and procedures you will learn. This Level 3 course includes anatomy and physiology when dealing with nails and micro-organisms in a beauty salon.

### Service Industries - Hairdressing

**LOCATION:** Hamilton City Campus

| Level 3            | 16 Weeks                               | Version | Credits |
|--------------------|--|---------|---------|
| 25792              | Dress long hair into elementary styles | 2       | 8       |
| 2866               | Shampoo hair and scalp                 | 6       | 4       |
| Total NZQA Credits |  |         | 12      |

### Service Industries - Beauty Therapy

**LOCATION:** Hamilton City Campus

| Level 3            | 16 Weeks   | Version | Credits |
|--------------------|--|---------|---------|
| 27647              | Perform make-up services   | 4       | 10      |
| 27176              | Describe micro-organisms in a beauty salon or clinic   | 2       | 2       |
| 27164              | Demonstrate knowledge of the structure and functions of a nail, and anatomy and physiology relevant to nail services | 2       | 4       |
| Total NZQA Credits |  |         | 16      |



## Introduction to Professional Cookery

This Year 3 programme will give you the opportunity to further develop your cooking skills in a commercial environment. You will learn how to blend ingredients and flavours together and master mouth-watering local and international dishes.

### Service Industries - Professional Cookery

**LOCATION:** Hamilton Rotokauri Campus

| Level 3            | 32 Weeks   | Version | Credits |
|--------------------|--|---------|---------|
| 30818              | Prepare dishes using basic methods of Asian cookery in a commercial kitchen  | 1       | 10      |
| 13343              | Demonstrate knowledge of nutrition in commercial catering                    | 6       | 5       |
| 13310              | Prepare and produce basic hot and cold dessert items in a commercial kitchen | 5       | 5       |
| 13293              | Prepare and cook basic vegetable dishes in a commercial kitchen              | 5       | 6       |
| Total NZQA Credits |  |         | 26      |

# Educational Achievement in Exercise Science

A programme of study that is more than just sport, *Sport and Exercise Science NCEA Level 3* is the application of scientific principles to how humans' function in sport, health, fitness, well-being and performance.

You will learn about sport and exercise topics such as anatomy, physiology, wellness, mental health well-being, human behaviour, exercise, and nutrition.

The practical components of this programme will enable you to understand the science behind how the body works.



## Service Industries - Exercise Science

**LOCATION:** Hamilton Rotokauri Campus

| Level 3            | 32 Weeks  | Version | Credits |
|--------------------|---|---------|---------|
| 27457              | Describe the anatomy and physiology systems associated organs of the human body                                     | 4       | 6       |
| 30447              | Demonstrate basic knowledge of anatomical structures and physiological responses to exercise                        | 2       | 5       |
| 30932              | Demonstrate knowledge of pre-designed exercise programmes, exercise principles, components and adherence            | 1       | 10      |
| 30448              | Work professionally and safely as an exercise instructor to promote health and well-being within an exercise family | 1       | 8       |
| Total NZQA Credits |   |         | 29      |

# How do I enrol?

Talk to your school's careers advisor to enrol. They will discuss your options with you, and work on the pathway that best suits your interests. They will also help you plan WTA around the subjects you are undertaking at school. Some schools may contact your family to explain your commitment to one-day-per-week at Wintec for WTA. We will work together with your school to support you in your chosen career pathway.

[wintec.ac.nz/wta-enrolment-resources](http://wintec.ac.nz/wta-enrolment-resources)





## How do I apply? How do I get selected?

Make an appointment to talk to your careers advisor at school about applying for one of our courses.

## Is there an age restriction for WTA?

You must be aged 15 or over at the start of the calendar year, be enrolled in a secondary school, and be in Year 11, 12 or 13. Adult students and school leavers are not eligible for the Waikato Trades Academy. If you are turning 15 between January and March, contact WTA to discuss possible options.

## Additionally, you will need to have:

- A genuine interest in the programme of choice
- A record of regular school attendance
- A record of consistent and responsible behaviour at school
- A demonstration of maturity to be able to study within a tertiary environment and ability to manage the associated workload

Your careers advisor will process your enrolment at Wintec. *Please note: spaces are limited.*

## What happens next?

If successful, you will receive acceptance and course information via their school careers advisor.

## How will I get to Wintec?

Depending on your location, you may be eligible for travel assistance. Please talk to your careers advisor if this applies to you.

## What should I wear?

Students are expected to wear suitable clothing and footwear for their course. *Please note: Personal Protective Clothing (PPE) will be provided for selected programmes.*

## What behaviour is expected of me at Wintec?

- Respectful, responsible and mature behaviour is always expected.
- Students are expected to maintain 100% attendance so they can get the most out of their Wintec experience.
- Normal school rules apply with respect to alcohol, smoking, vaping, drug use – these are forbidden.
- Students are to remain on the Wintec campus during the hours of course. Students are to notify Wintec tutor if they need to leave early by providing a letter signed by parent/caregiver or school leave form.
- Any serious attendance or behaviour concerns will be addressed in a timely manner and communicated to affected parties. Please note: Serious misconduct may result in a discontinuation of enrolment.
- Personal Protective Equipment (PPE) is compulsory for specific programmes due to health and safety policies. Unfortunately, you will not be able to enter restricted areas without the correct PPE gear.

## What can I expect?

- Hands-on learning experience
- Theory, practical, and self-directed learning
- Exposure to literacy and numeracy competencies
- Experience at state-of-the-art facilities and commercial spaces
- Relevant industry skills and experience

**Hamilton City Campus**

A Block, Gate 3, Tristram Street, Hamilton

**Hamilton Rotokauri Campus**

Student Hub, 51 Akoranga Road, Hamilton

**Hamilton Gardens Campus**

Gate 2, Cobham Drive, Hamilton

**Thames Regional Hub Campus**

25 Kopu Road, Thames

**Ōtorohanga Regional Hub Campus**

128-130 Maniapoto Street, Ōtorohanga



0800 2 Wintec (0800 294 6832)



[info@wintec.ac.nz](mailto:info@wintec.ac.nz)



[wintec.ac.nz](http://wintec.ac.nz)



[facebook.com/wintec](https://facebook.com/wintec)



[instagram.com/wintecnz](https://instagram.com/wintecnz)



[nz.linkedin.com/school/waikato-institute-of-technology](https://nz.linkedin.com/school/waikato-institute-of-technology)